

EVIO Labs Medford (pka Kenevir Research)  
 540 East Vilas Road, Suite F, Central Point, OR 97502  
 541-668-7444 / OLCC 010-1001626980D / www.EVIOLabs.com

**Sapphire**  
*Kelley Thomas*  
*Informational Testing*



**Confident Cannabis ID:** 1811KR0086.2728  
**Sample ID:** M180918-04  
**Matrix:** Hemp  
**METRC Batch #:**  
**Sampling Method/SOP:** SOP.T.20.010  
**Date Sampled:** 11/27/18 09:00  
**Date Accepted:** 11/27/18  
**Results Valid Until:** 11/27/19  
**Harvest/Process Lot ID:**

**Batch ID:**  
**Batch Size:**  
**Unit for Sale:**  
**Harvest/Production Date:**

## Cannabinoid Analysis

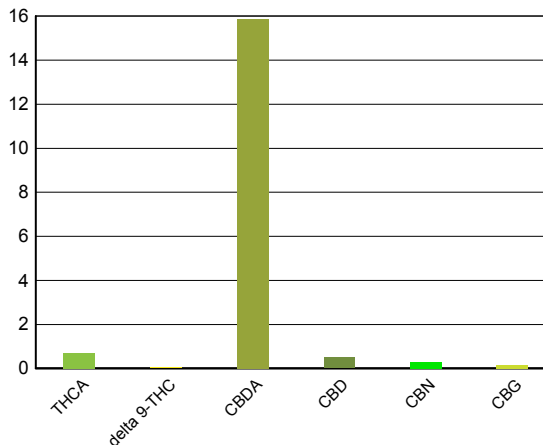
**FOR INFORMATIONAL USE ONLY - NOT FOR REGULATORY PURPOSES**

Date/Time Extracted: 11/28/18 11:40  
 Date/Time Analyzed: 11/28/18 20:27

Analysis Method/SOP: SOP.T.40.020

Cannabinoids	LOQ(%)	mg/g	% weight	Cannabinoids Profile
--------------	--------	------	----------	----------------------

<b>Total CBD</b> ((CBDA*0.877)+CBD)		<b>144</b>	<b>14.4</b>	
THCA	0.0500	7.04	0.704	
delta 9-THC	0.0500	0.508	0.0508	
delta 8-THC	0.0500	< LOQ	< LOQ	
CBDA	0.0500	159	15.9	
CBD	0.0500	4.92	0.492	
CBN	0.0500	2.91	0.291	
CBG	0.0500	1.55	0.155	
CBC	0.0500	< LOQ	< LOQ	
Sum of tested Cannabinoids	0.0500	155	15.5	



## Moisture Content

Date/Time Analyzed: 11/27/18 14:30  
 Analysis Method/SOP: SOP.T.40.010

**Moisture: 10.2 %**

Ian Riversong  
 Laboratory Director - 12/11/2018

EVIO Labs Medford (pka Kenevir Research)  
 540 East Vilas Road, Suite F, Central Point, OR 97502  
 541-668-7444 / OLCC 010-1001626980D / www.EVIOLabs.com

**FOR INFORMATIONAL USE ONLY - NOT FOR REGULATORY PURPOSES**

## Sapphire

**Kelley Thomas**

**Informational Testing**

Sample ID: M180918-04 METRC Batch #:

Matrix: Hemp

Date Sampled: 11/27/18 09:00

Date Accepted: 11/27/18

Results Valid Until: 11/27/19

Batch ID:

Batch Size:

Sampling Method/SOP: SOP.T.20.010

### Terpene Analysis

Date/Time Extracted: 12/03/18 10:56

Analysis Method/SOP: SOP.T.40.090

Date/Time Analyzed: 12/05/18 20:30

Analyte	LOQ (mg/g)	Mass (mg/g)	Mass (%)	Analyte	LOQ (mg/g)	Mass (mg/g)	Mass (%)
alpha-Pinene	0.200	2.05	0.205	beta-Pinene	0.200	0.745	0.0745
Camphene	0.200	< LOQ	< LOQ	Sabinene	0.200	< LOQ	< LOQ
Sabinene hydrate	0.200	< LOQ	< LOQ	beta-Myrcene	0.200	6.54	0.654
p-Mentha-1,5-diene	0.200	< LOQ	< LOQ	(+)-3-Carene	0.200	< LOQ	< LOQ
alpha-Terpinene	0.200	< LOQ	< LOQ	gamma-Terpinene	0.200	< LOQ	< LOQ
Limonene	0.200	0.420	0.042	Eucalyptol	0.200	< LOQ	< LOQ
Guaiol	0.200	< LOQ	< LOQ	Terpinolene	0.200	< LOQ	< LOQ
Linalool	0.200	< LOQ	< LOQ	Camphor	0.200	< LOQ	< LOQ
(+)-Camphor	0.200	< LOQ	< LOQ	(-)-Camphor	0.200	< LOQ	< LOQ
Isopulegol	0.200	< LOQ	< LOQ	(+)-Borneol	0.200	< LOQ	< LOQ
(-)-Borneol	0.200	< LOQ	< LOQ	Hexahydrothymol	0.200	< LOQ	< LOQ
Geraniol	0.200	< LOQ	< LOQ	(+)-Pulegone	0.200	< LOQ	< LOQ
Nerol	0.200	< LOQ	< LOQ	cis-Nerolidol	0.200	< LOQ	< LOQ
trans-Nerolidol	0.200	< LOQ	< LOQ	Geranyl acetate	0.200	< LOQ	< LOQ
alpha-Cedrene	0.200	< LOQ	< LOQ	trans-Caryophyllene	0.200	1.18	0.118
beta-Caryophyllene	0.200	< LOQ	< LOQ	alpha-Humulene	0.200	0.561	0.0561
Valencene	0.200	< LOQ	< LOQ	alpha-Farnesene	0.200	1.29	0.129
beta-Farnesene	0.200	0.340	0.034	Cedrol	0.200	< LOQ	< LOQ
alpha-Bisabolol	0.200	< LOQ	< LOQ	Fenchone	0.200	< LOQ	< LOQ
Fenchyl Alcohol	0.200	< LOQ	< LOQ	trans, beta- Ocimene	0.200	< LOQ	< LOQ
beta, cis- Ocimene	0.200	< LOQ	< LOQ	Terpineol	0.200	< LOQ	< LOQ
Total (Sum):						13.13	1.31

Analysis performed on GCMS with confirmation ion identification. Terpene analysis is not ORELAP accredited.  
 Results reported as dry weight. LOQ = Limit of Quantitation ;Terpene analysis performed in conjunction with EVIO Labs



Ian Riversong  
 Laboratory Director - 12/11/2018

EVIO Labs Medford (pka Kenevir Research)  
 540 East Vilas Road, Suite F, Central Point, OR 97502  
 541-668-7444 / OLCC 010-1001626980D / www.EVIOLabs.com

## Quality Control

**Batch: M18K105 - SOP.T.30.050 Prep for Cannabinoids**

Blank(M18K105-BLK1)			Extracted: 11/28/18 11:40		Analyzed: 11/28/18 18:43		
Analyte	Result	LOQ	Recovery Limits	Analyte	Result	LOQ	Recovery Limits
THCA	< LOQ	0.0500 (%)	< LOQ	delta 9-THC	< LOQ	0.0500 (%)	< LOQ
delta 8-THC	< LOQ	0.0500 (%)	< LOQ	CBDA	< LOQ	0.0500 (%)	< LOQ
CBD	< LOQ	0.0500 (%)	< LOQ	CBG	< LOQ	0.0500 (%)	< LOQ
CBN	< LOQ	0.0500 (%)	< LOQ	CBC	< LOQ	0.0500 (%)	< LOQ
Sum of tested Cannabinoid:	< LOQ	0.0500 (%)	< LOQ				

LCS(M18K105-BS1)			Extracted: 11/28/18 11:40		Analyzed: 11/28/18 19:00		
Analyte	% Recovery	LOQ	Recovery Limits	Analyte	% Recovery	LOQ	Recovery Limits
THCA	107	(%)	70-130	delta 9-THC	103	(%)	70-130
CBDA	106	(%)	70-130	CBD	105	(%)	70-130



Ian Riversong  
 Laboratory Director - 12/11/2018