

EVIO Labs Medford (pka Kenevir Research)  
 540 East Vilas Road, Suite F, Central Point, OR 97502  
 541-668-7444 / OLCC 010-1001626980D / www.EVIOLabs.com

**Bast**  
*Kelley Thomas*  
*Informational Testing*



**Confident Cannabis ID:** 1811KR0086.2727  
**Sample ID:** M180918-03  
**Matrix:** Hemp  
**METRC Batch #:**  
**Sampling Method/SOP:** SOP.T.20.010  
**Date Sampled:** 11/27/18 09:00  
**Date Accepted:** 11/27/18  
**Results Valid Until:** 11/27/19  
**Harvest/Process Lot ID:**

**Batch ID:**  
**Batch Size:**  
**Unit for Sale:**  
**Harvest/Production Date:**

## Cannabinoid Analysis

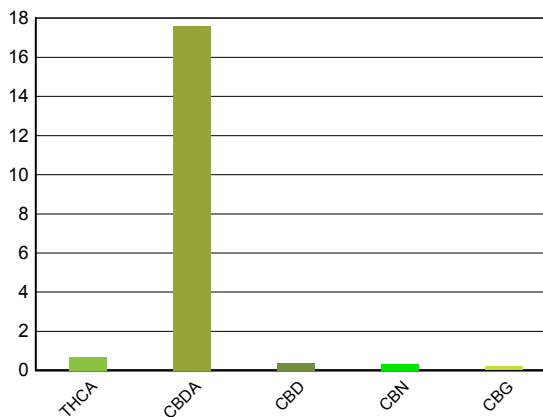
**FOR INFORMATIONAL USE ONLY - NOT FOR REGULATORY PURPOSES**

Date/Time Extracted: 11/28/18 11:40  
 Date/Time Analyzed: 11/28/18 20:10

Analysis Method/SOP: SOP.T.40.020

Cannabinoids	LOQ(%)	mg/g	% weight	Cannabinoids Profile
--------------	--------	------	----------	----------------------

<b>Total CBD</b> <small>((CBDA*0.877)+CBD)</small>		<b>158</b>	<b>15.8</b>	
THCA	0.0500	6.85	0.685	
delta 9-THC	0.0500	< LOQ	< LOQ	
delta 8-THC	0.0500	< LOQ	< LOQ	
CBDA	0.0500	176	17.6	
CBD	0.0500	3.87	0.387	
CBN	0.0500	3.08	0.308	
CBG	0.0500	1.92	0.192	
CBC	0.0500	< LOQ	< LOQ	
Sum of tested Cannabinoids	0.0500	169	16.9	



## Moisture Content

Date/Time Analyzed: 11/27/18 14:30  
 Analysis Method/SOP: SOP.T.40.010

**Moisture: 9.92 %**

Ian Riversong  
 Laboratory Director - 12/11/2018

EVIO Labs Medford (pka Kenevir Research)  
 540 East Vilas Road, Suite F, Central Point, OR 97502  
 541-668-7444 / OLCC 010-1001626980D / www.EVIOLabs.com

**FOR INFORMATIONAL USE ONLY - NOT FOR REGULATORY PURPOSES**

**Bast**

**Kelley Thomas**

**Informational Testing**

Sample ID: M180918-03      METRC Batch #:

Matrix: Hemp

Date Sampled: 11/27/18 09:00

Date Accepted: 11/27/18

Results Valid Until: 11/27/19

Batch ID:

Batch Size:

Sampling Method/SOP: SOP.T.20.010

## Terpene Analysis


Date/Time Extracted: 12/03/18 10:56

Analysis Method/SOP: SOP.T.40.090

Date/Time Analyzed: 12/05/18 20:01

Analyte	LOQ (mg/g)	Mass (mg/g)	Mass (%)	Analyte	LOQ (mg/g)	Mass (mg/g)	Mass (%)
alpha-Pinene	0.200	2.30	0.23	beta-Pinene	0.200	0.850	0.085
Camphene	0.200	< LOQ	< LOQ	Sabinene	0.200	0.923	0.0923
Sabinene hydrate	0.200	< LOQ	< LOQ	beta-Myrcene	0.200	10.0	1
p-Mentha-1,5-diene	0.200	< LOQ	< LOQ	(+)-3-Carene	0.200	< LOQ	< LOQ
alpha-Terpinene	0.200	< LOQ	< LOQ	gamma-Terpinene	0.200	< LOQ	< LOQ
Limonene	0.200	0.571	0.0571	Eucalyptol	0.200	< LOQ	< LOQ
Guaiol	0.200	0.662	0.0662	Terpinolene	0.200	< LOQ	< LOQ
Linalool	0.200	0.424	0.0424	Camphor	0.200	< LOQ	< LOQ
(+)-Camphor	0.200	< LOQ	< LOQ	(-)-Camphor	0.200	< LOQ	< LOQ
Isopulegol	0.200	< LOQ	< LOQ	(+)-Borneol	0.200	< LOQ	< LOQ
(-)-Borneol	0.200	< LOQ	< LOQ	Hexahydrothymol	0.200	< LOQ	< LOQ
Geraniol	0.200	< LOQ	< LOQ	(+)-Pulegone	0.200	< LOQ	< LOQ
Nerol	0.200	< LOQ	< LOQ	cis-Nerolidol	0.200	< LOQ	< LOQ
trans-Nerolidol	0.200	0.244	0.0244	Geranyl acetate	0.200	< LOQ	< LOQ
alpha-Cedrene	0.200	< LOQ	< LOQ	trans-Caryophyllene	0.200	1.50	0.15
beta-Caryophyllene	0.200	0.203	0.0203	alpha-Humulene	0.200	0.691	0.0691
Valencene	0.200	< LOQ	< LOQ	alpha-Farnesene	0.200	0.544	0.0544
beta-Farnesene	0.200	< LOQ	< LOQ	Cedrol	0.200	< LOQ	< LOQ
alpha-Bisabolol	0.200	0.275	0.0275	Fenchone	0.200	< LOQ	< LOQ
Fenchyl Alcohol	0.200	< LOQ	< LOQ	trans, beta- Ocimene	0.200	< LOQ	< LOQ
beta, cis- Ocimene	0.200	< LOQ	< LOQ	Terpineol	0.200	< LOQ	< LOQ
Total (Sum):						19.19	1.92

Analysis performed on GCMS with confirmation ion identification. Terpene analysis is not ORELAP accredited.  
 Results reported as dry weight. LOQ = Limit of Quantitation ;Terpene analysis performed in conjunction with EVIO Labs

 Ian Riversong  
 Laboratory Director - 12/11/2018

EVIO Labs Medford (pka Kenevir Research)  
 540 East Vilas Road, Suite F, Central Point, OR 97502  
 541-668-7444 / OLCC 010-1001626980D / www.EVIOLabs.com

## Quality Control

**Batch: M18K105 - SOP.T.30.050 Prep for Cannabinoids**

Blank(M18K105-BLK1)			Extracted: 11/28/18 11:40		Analyzed: 11/28/18 18:43		
Analyte	Result	LOQ	Recovery Limits	Analyte	Result	LOQ	Recovery Limits
THCA	< LOQ	0.0500 (%)	< LOQ	delta 9-THC	< LOQ	0.0500 (%)	< LOQ
delta 8-THC	< LOQ	0.0500 (%)	< LOQ	CBDA	< LOQ	0.0500 (%)	< LOQ
CBD	< LOQ	0.0500 (%)	< LOQ	CBG	< LOQ	0.0500 (%)	< LOQ
CBN	< LOQ	0.0500 (%)	< LOQ	CBC	< LOQ	0.0500 (%)	< LOQ
Sum of tested Cannabinoid:	< LOQ	0.0500 (%)	< LOQ				

LCS(M18K105-BS1)			Extracted: 11/28/18 11:40		Analyzed: 11/28/18 19:00		
Analyte	% Recovery	LOQ	Recovery Limits	Analyte	% Recovery	LOQ	Recovery Limits
THCA	107	(%)	70-130	delta 9-THC	103	(%)	70-130
CBDA	106	(%)	70-130	CBD	105	(%)	70-130



Ian Riversong  
 Laboratory Director - 12/11/2018